



Spare Parts
Repair & Development

Reduce parts & labor cost

Increase productivity & reduce down time

Reduce inventory cost

شركة تطوير قطع الغيار الصناعية ذ.م.م
Industrial Spare Parts Development Co. LLC

You can **COUNT** on us

Produced by: Digital Colors



شركة تطوير قطع الغيار الصناعية ذ.م.م
Industrial Spare Parts Development Co. LLC

P.O. Box 142350 Amman-11814 Jordan
Tel.: +962 (6) 58 55 465
Fax: +962 (6) 58 55 485
e-mail: support@abdotec.com

Brief History:

In 1978 we were the leaders in Jordan to introduce the technology of spare parts reclamation and repair helping our clients adapt such technologies in their maintenance facilities. Through the years, we gained intensive experience in this field, and succeeded in building a network of satisfied customers in Jordan.

In 1987, we expanded our services by establishing a new facility to provide our clients, including small industries, with professional turnkey solutions.

In 2003, we moved to our new location, better equipped for handling and processing larger & more complex spare parts. We are proud to have helped our customers save money, effort and time by utilizing our diversified experience with various spare parts across a wide spectrum of industries.

Our highly skilled team is dedicated to quality and committed to customer service to guarantee customers complete satisfaction.

Our Mission:

To build a long lasting relationship and provide a reliable quality service to our customers, making AbdoTec® the ideal choice for all of its local and international customers.

Our Objective:

To maintain AbdoTec®'s position as the leading company in the repair field in Jordan, which enables us to save our customers millions of dollars in spare parts cost, down time and maintenance costs.

Our Commitment:

We stand behind our service and our name. Spare parts are rebuilt with high standards to work like new or even better.

Being the leaders in providing comprehensive solutions to wear & tear problems in Jordan, by utilizing the latest repair and coating technologies, we have been and continue to be a dependable defence line against common wear & tear phenomena to major companies in most industries, including:

- Petroleum
- Water, Water-Treatment & Pumps
- Electric Motors
- Earth Moving Equipment
- Phosphate Mining / Draglines
- Potash
- Cement
- Plastics
- Pulp & Paper
- Pharmaceutical
- Metal Forming
- Hydraulic Jacks
- Aluminum Extrusion
- Textiles, Carpets
- Oxygen Cryogenic Plants
- Salt Production (NaCl)
- Marine

The Industrialist's Challenge

Increasing productivity and reducing down-time are the major challenges to companies in the highly competitive market place.

Obsolete spare parts and on going maintenance efforts cause major down-times, which in addition to production drop, bare higher maintenance costs on the long run.



Our services include:

- Improve spare parts technical specs (performance & service life)
 - Produce reliable competitive spare parts
 - Re-manufacture used spare parts
 - Obsolete parts recovery



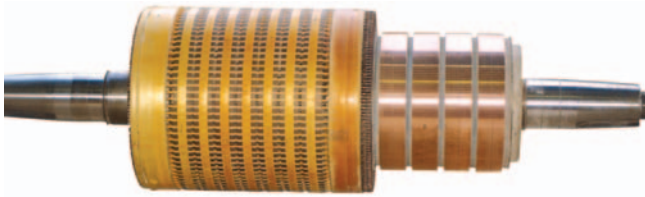
AbdoTec® Solutions:

Our job shop provides comprehensive services to customers, from diagnosing current wear & tear, cracks, and defective metal to developing and repairing spare parts. We also provide industrial consultation for our customers to improve productivity and reduce maintenance cost.

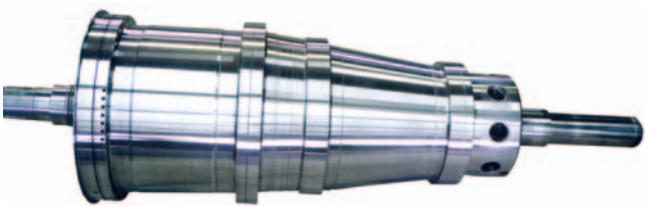
- Application-specific anti-wear protective coatings.
- Rebuilding spare parts using special technologies to avoid problems such as: distortion of base metal, burn-through, and formation of brittle phases.
- Rebuilding wear areas, providing proper match with base metal in terms of both mechanical properties and appearance.

Restore original dimensions (Tolerances)

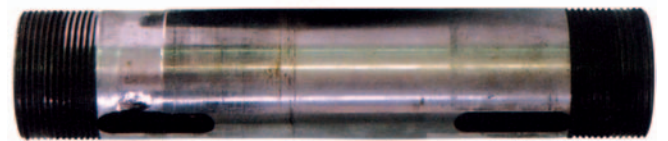
High accuracy alignment & finishing



Rotors: Rebuilt bearing seats without affecting base metal.



Olive Oil Decanter: Repairs could be done on single parts or complete assembly overhaul.



Shafts: Restore tolerances between shafts and mating parts.

Reduce Hidden Costs

The reliance on spare parts as a method for minimizing serious break downs requires large inventory. This results in capital investment in non-productive parts, space and labor. Statistical evidence from studies of typical industrial inventories placed the "hidden costs" of inventories at about 30% of the total purchase price of the spare parts.

Improve Productivity

Experience throughout industry has proven that repairing a part costs a fraction of the cost of replacement, saves substantial inventory costs for expenditure elsewhere and adds considerably to productivity.

Improve spare parts performance and durability

Self-Lubricant



Pinion Housing and Trunnion: Self-lubricant surface reduces friction with the fiber bushes.



Balancers: Better sliding properties. Longer service life.



Turbo-Charger Shaft:

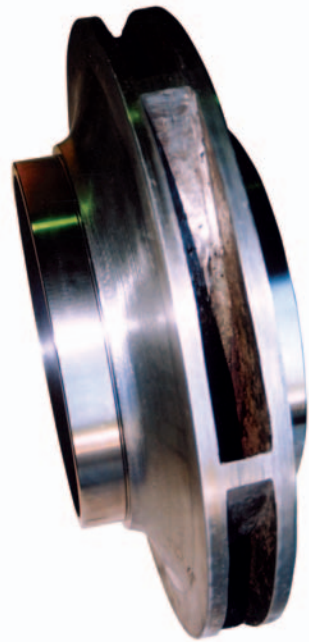
Repair is distortion-free and out performs OEM's as rebuilt surfaces are NOT sensitive to oil flow interruptions.

Wear Resistant



Hydraulic Coupling (Torque Converter):

Special wear resistant Ni-alloy prolonged service life of the Aluminum turbine.



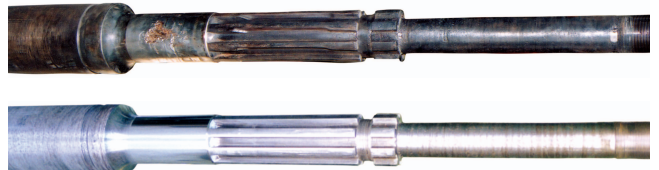
Pump Impellor Necks and Wear Rings: Special coatings increase durability and maintain efficiency.



Pins: Fabricated and coated with excellent metal-to-metal friction properties (60 HRC).



Pistons: Low coefficient of friction and excellent sliding surface; proven competent with OEM quality.



Mandrel for Shock Sub: Rebuilding worn chromed surface with special wear resistant alloy.

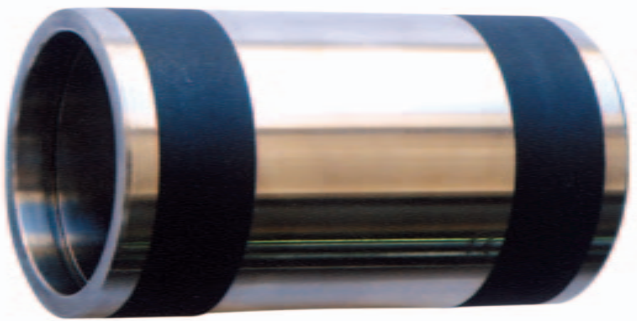
Ceramic Coating, Pumps



Sleeves Ø240mm: Ceramics increase service life up to 700% than stainless steel.



Shafts, packing seat: Excellent corrosion and sealing properties. 8 times longer service life than OEM part.



Sleeves: Guaranteed high sealing performance even at high speeds.



Shafts, seals and mechanical seal seats: Low coefficient of friction, perfect sealing conditions.

Repair vs. Replacement

In general maintenance repair will cost you no more than 20% and possibly as low as 10% of what you are now spending on needless replacement parts.

(A thirty year accumulated data study.)

Ceramic Coating, Yarn and Textiles



Goddet: Superior quality, competent to OEM.



Separated Rollers:

Even thin-walled delicate parts are repairable.

Spare Parts Salvation in the Plastics Industry

Our services include different mold repairs from pinpoint to major damages.

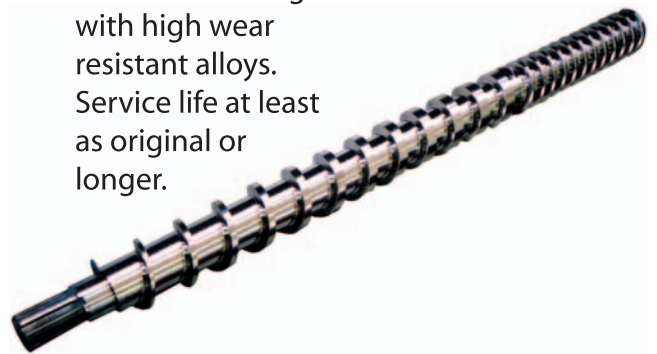


Joining Broken Parts with compatible high strength alloys.



PVC-Mixers: Reliable repairs with erosion and corrosion resistant materials.

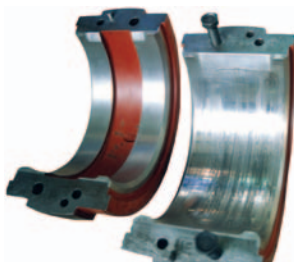
Extruders: Rebuilding with high wear resistant alloys. Service life at least as original or longer.



Die-Head: Rebuilt worn and damaged sets.

White Metal Spare Parts

Professional repairs with guaranteed precision and minimal downtime



Heavy duty Journal bearings Ø250mm:
Before repair



Cross-Head: Before & after.



Journal Bearings: After repair.

Broken Parts



Pump Casing: (Flow 1317m³/hr): Major failure due to an accident. Immediate repair brought the parts back into service within hours.



Cutting Edges: We have the right solution for it.



Centrifuge basket: Professional salvation of such fatigued parts.



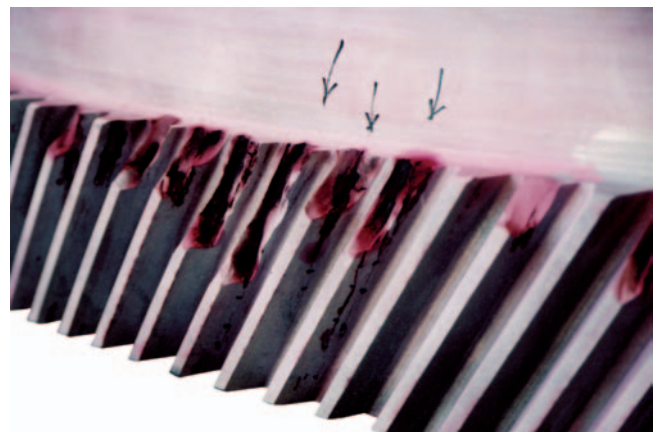
Gear Shaft: Joining such parts with superior alloys for Maximum Safety Margin.

Rotate Pinion shafts (2.5ton): Repairs have better elasticity and longer service life than original parts.





Intermediate Gear / $\varnothing 2.2$ m, 4 ton

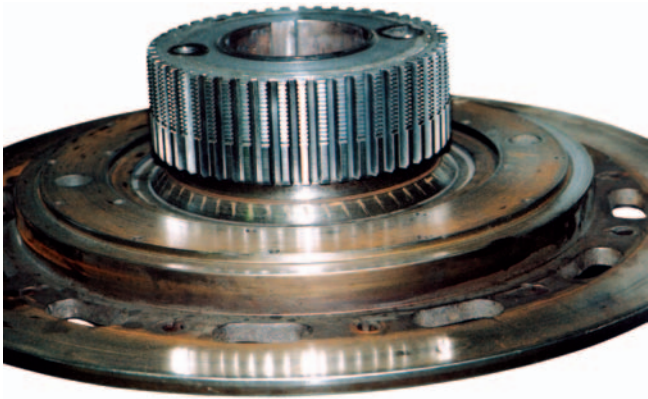


Heavy Duty Gears: Total in-house solutions.
Inspection, crack detection, rebuilding and
finishing.

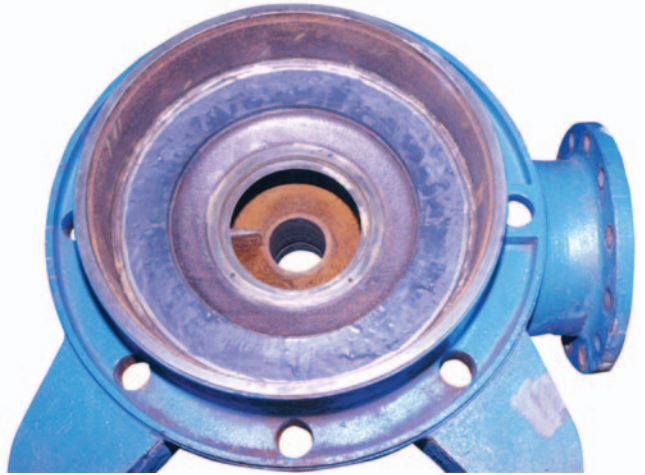
Shorter Delivery Time = Minimizing Down Time

Unavailability of replacement parts or delays in delivery can increase down time.
We can dramatically reduce down time.

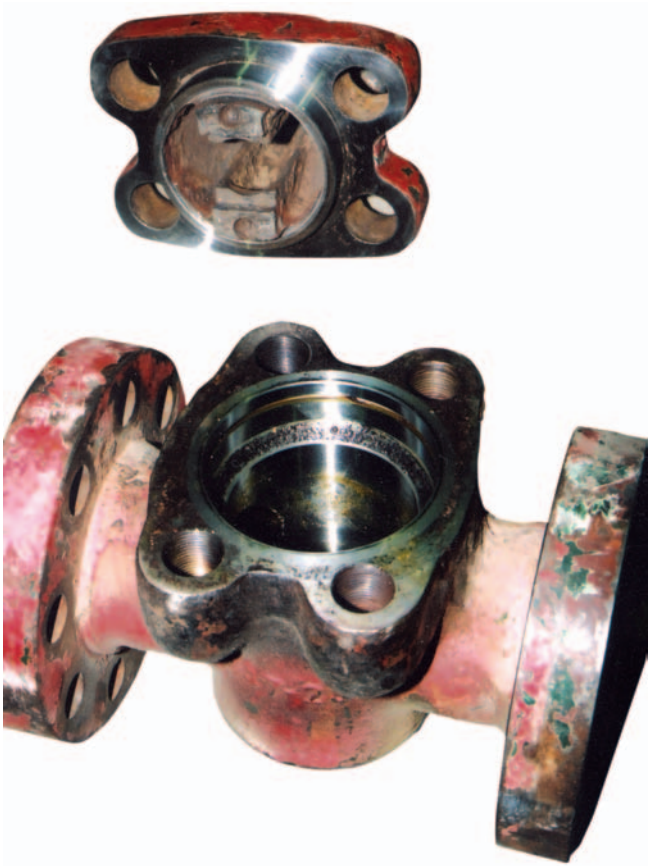
More wear and tear solutions



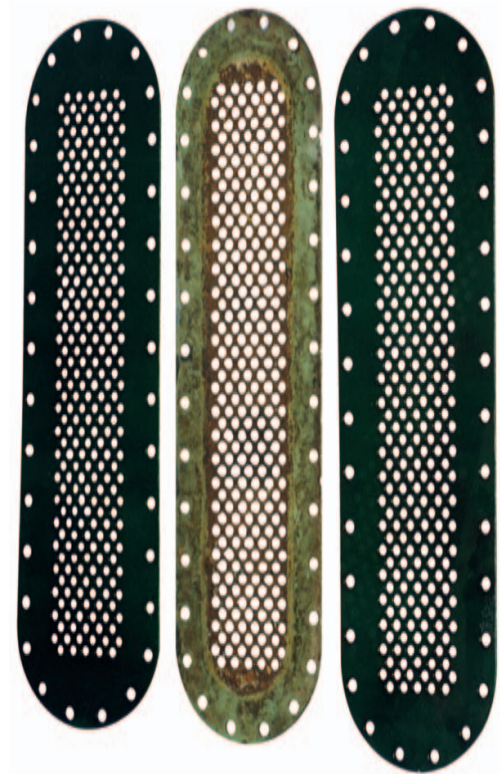
Clutch Sleeve Hub: Rebuilt splines and threads with improved mechanical specs resulting in longer service life.



Pump Body: Rebuilt with special anti-cavitation compound.



Valves: Complete rebuilding with durable anti-corrosion alloys.



Screens: Polymeric coating dramatically increases corrosion resistance and service life.